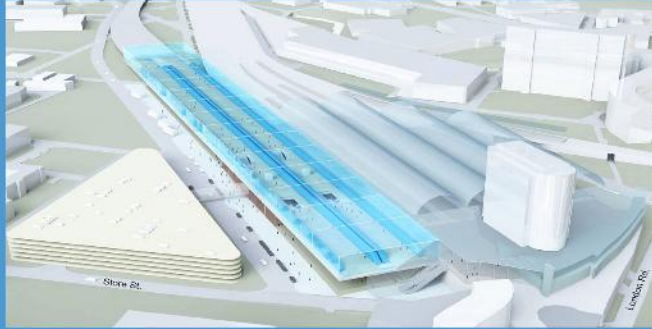




THIRDEYE

Technologies



Introduces
Blue Room Technology



A new revolutionary technology for the High Speed Rail Industry

'Delivering innovation for High Speed Rail Networks and transport infrastructure projects'

Revolutionise:

PLANNING / DESIGN / SAFETY /
DRIVER / CONSTRUCTION / FAMILIARISATION
O&M / INDUCTIONS / TRAINING /
INFRASTRUCTURE

Blue Room Generates:

- assets and equipment in precise detail
- 360 degree immersive environments for mass participation without the need for headsets or goggles
- the ability to physically walk through and interact with the equipment from the planning stage through to training and operations
- assets from CAD into 3D realtime immersive scenarios for applications in Rail centric environments.
- training scenarios with eyetracker data capture ability

The 'Blue Room' is a 360 degree patented Immersive reality technology for mass participation that requires no additional equipment to be worn such as goggles or headsets.

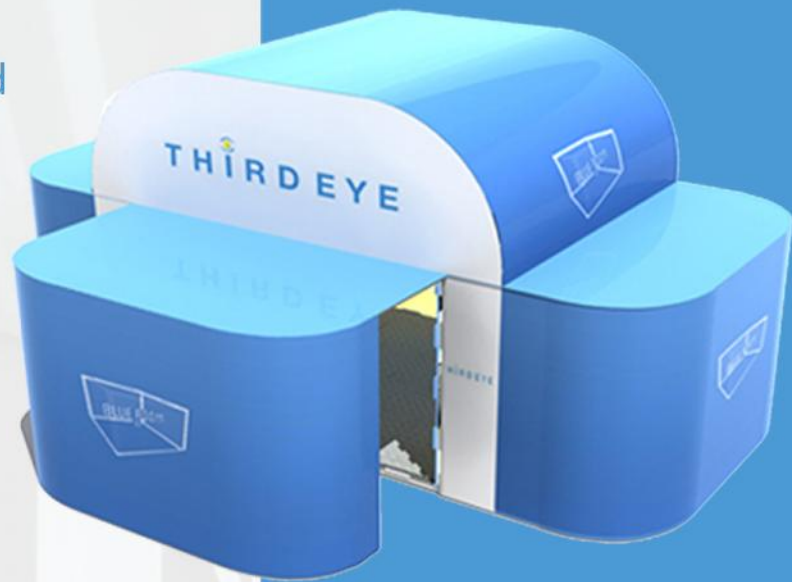
A major feature is it's ability to develop or replicate any required environment creating the first third generation technology of its kind, allowing personnel a real sense of movement and a true to life experience in a controlled setting.

The Blue Room is a module where all surfaces are screens and visual sequences are embedded seamlessly into an environment to allow planners, designers, trainees or operatives to be totally immersed in the asset in precise detail, developed from CAD and/or 3D models.

The system is interactive allowing the operator to navigate through and manipulate the environment at their own discretion, with the addition of an *Immersive Surround Audio System* which complements the effect of viewer displacement to a new location.

"Imagine taking a complex 3D model of a Train, Station or Line

Now imagine walking into a blue room module measuring approximately 4m x 4m and being totally immersed inside that model replicating the actual asset with the ability to navigate and interact in real time."



Blue Room at Design stage

- Consent/ planning reviews
- Layout review
- HSE review
- Stakeholders review
- Infrastructure and Construction design
- O & M Review
- Engaging customers end users into the design process
- Safety/ Emergency planning
- Simulation of Rolling Stock
- Disaster planning

Blue Room for training

- Driver Training
- Servicing
- O & M training
- Emergency training
- ERTMS
- Control Room scenario training
- Electrification and overhead line training
- Strategic security planning, training and operations
- Familiarisation

Third Eye Technologies

Third Eye currently delivers the Blue Room in a multitude of other market sectors, including: Defense & Security (UK MOD), Consumer Research and Medical.

Contact Us and find out more information at:

Visit: www.thirdeye.tv

Email: info@blueroomisv.com

